



VOORLOPIG ONTWERP
BRANDWEERKAZERNE
PAPENDRECHT

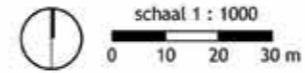


STEDENBOUWKUNDIGE UITGANGSPUNTEN



herontwikkeling Gemeentewerf Willem Dreeslaan,
gemeente Papendrecht 26-02-2018

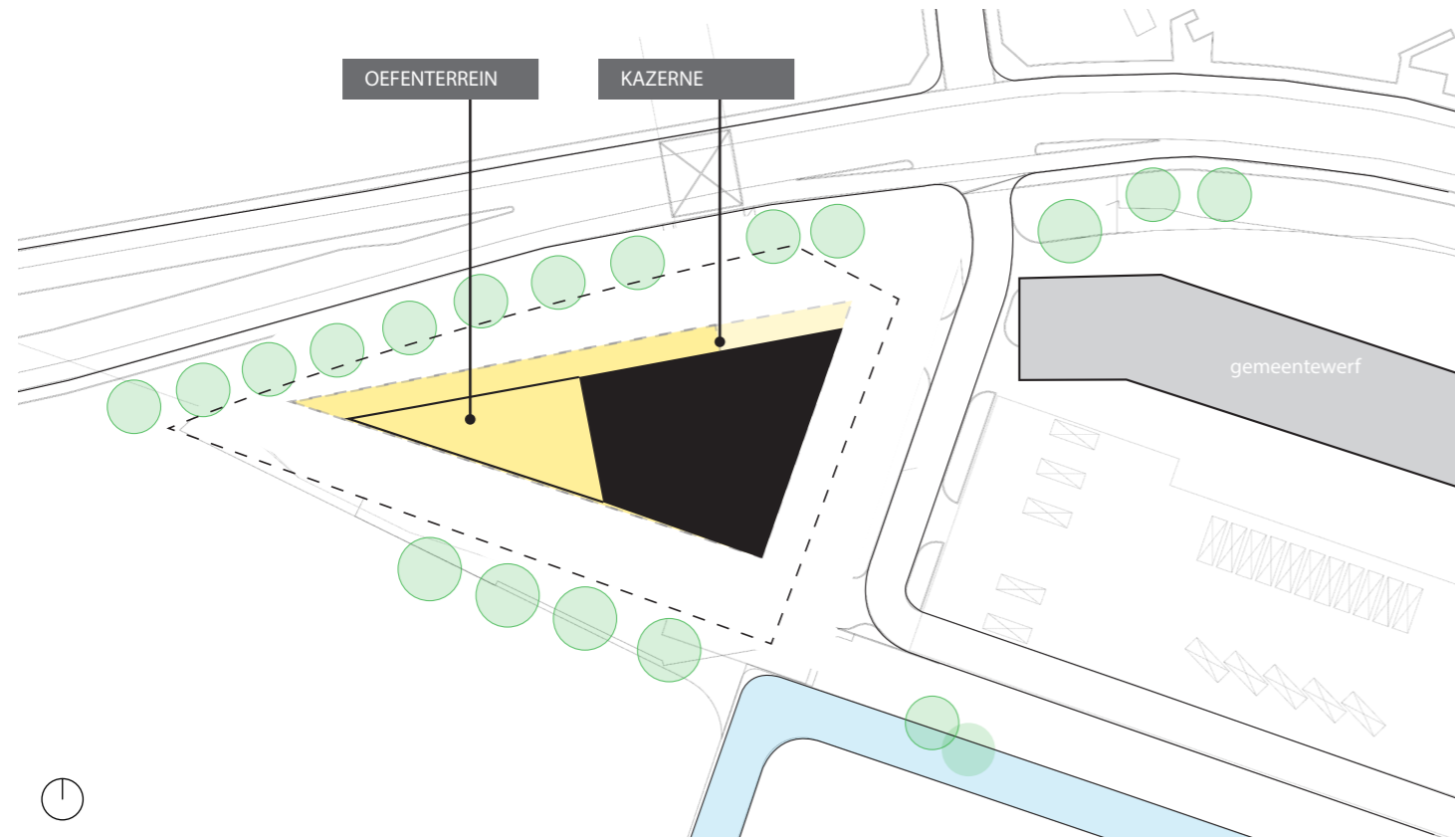
Stedenbouwkundig ontwerp
variant 2



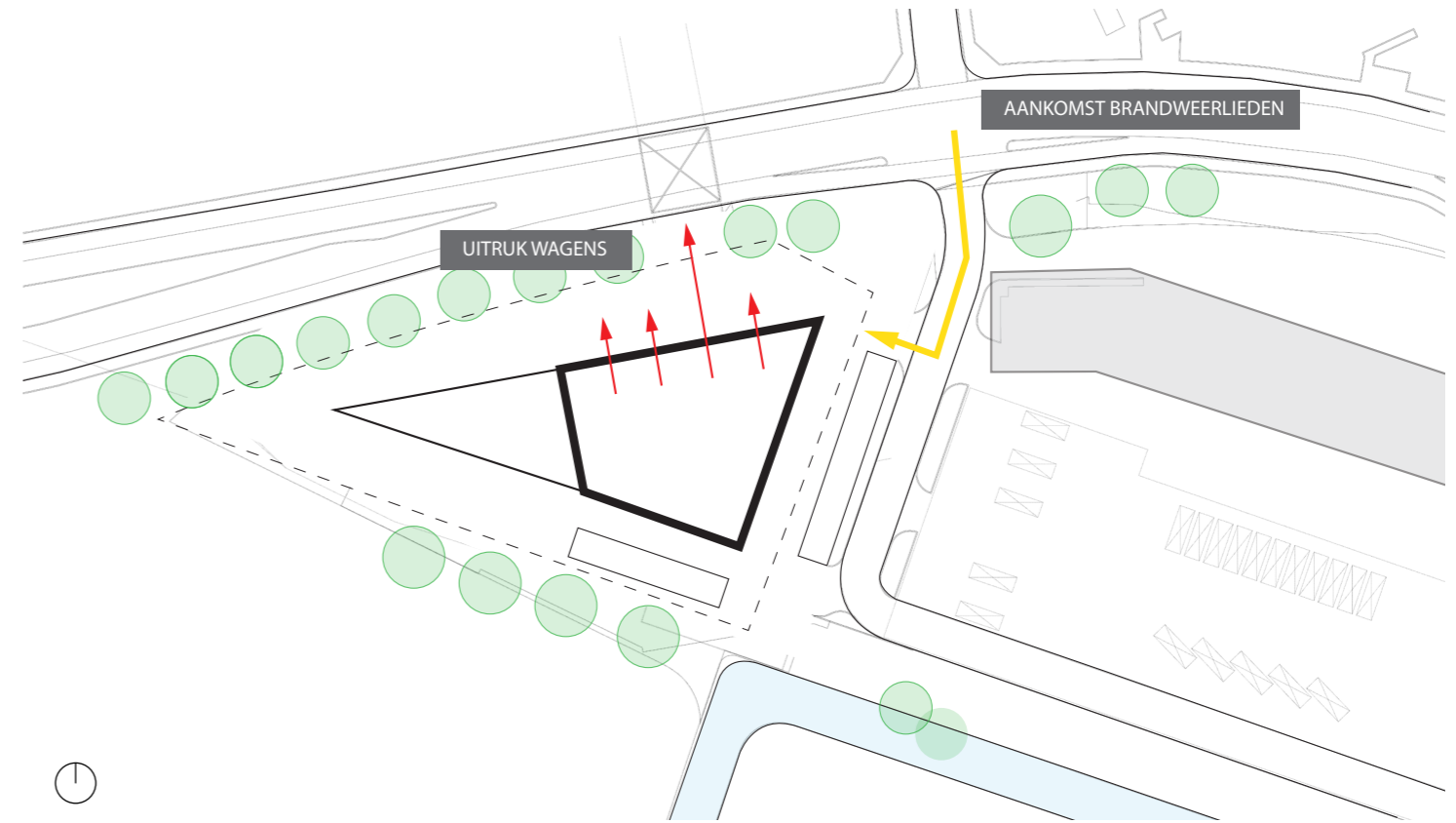
ONTWERP CONCEPT



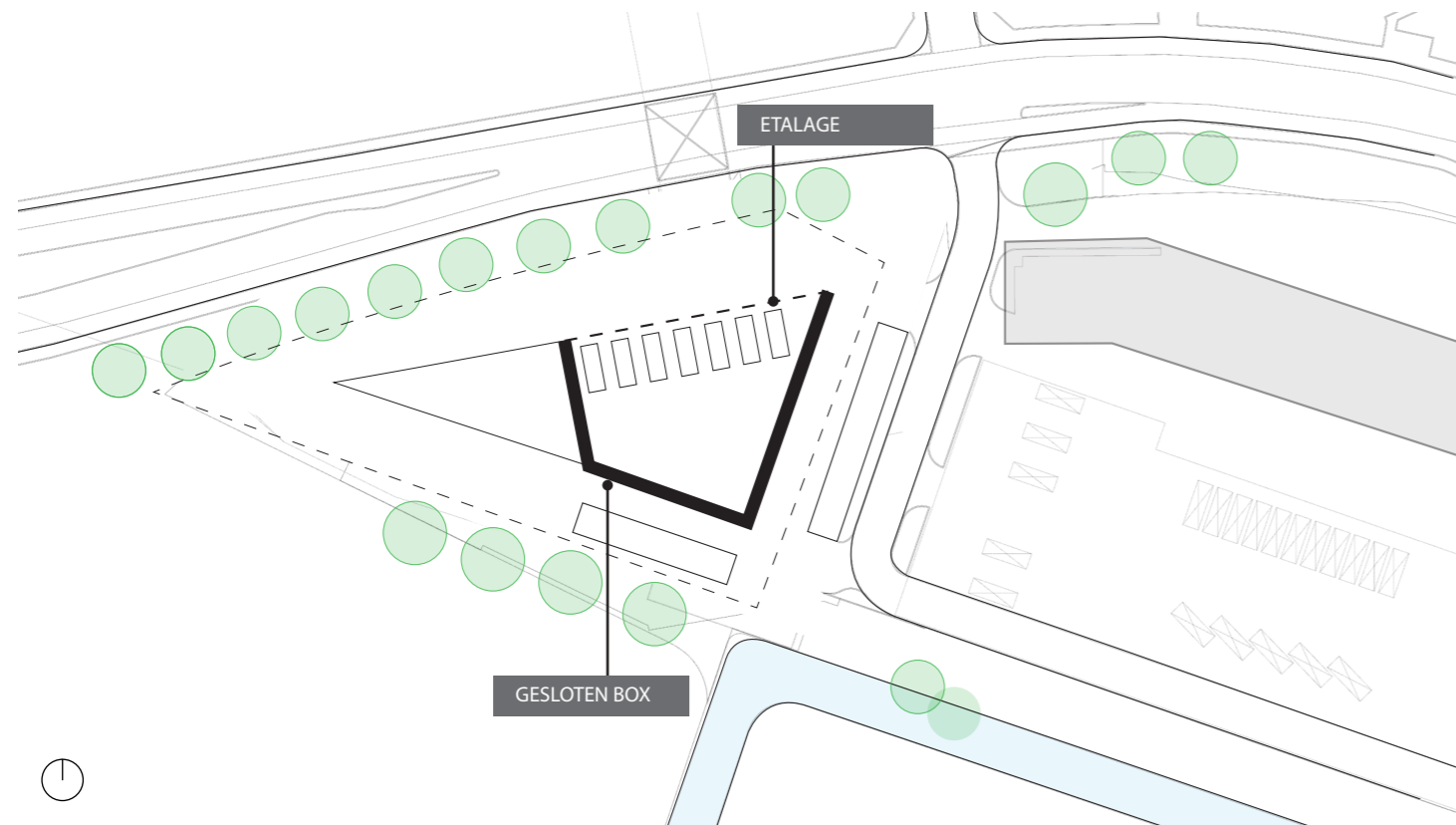
CONTOUR GEBOUW



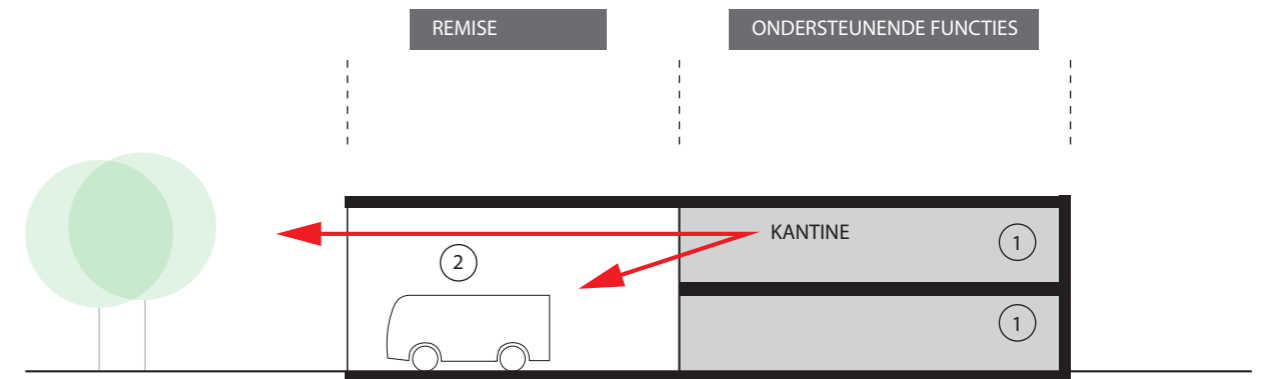
LOGISTIEK

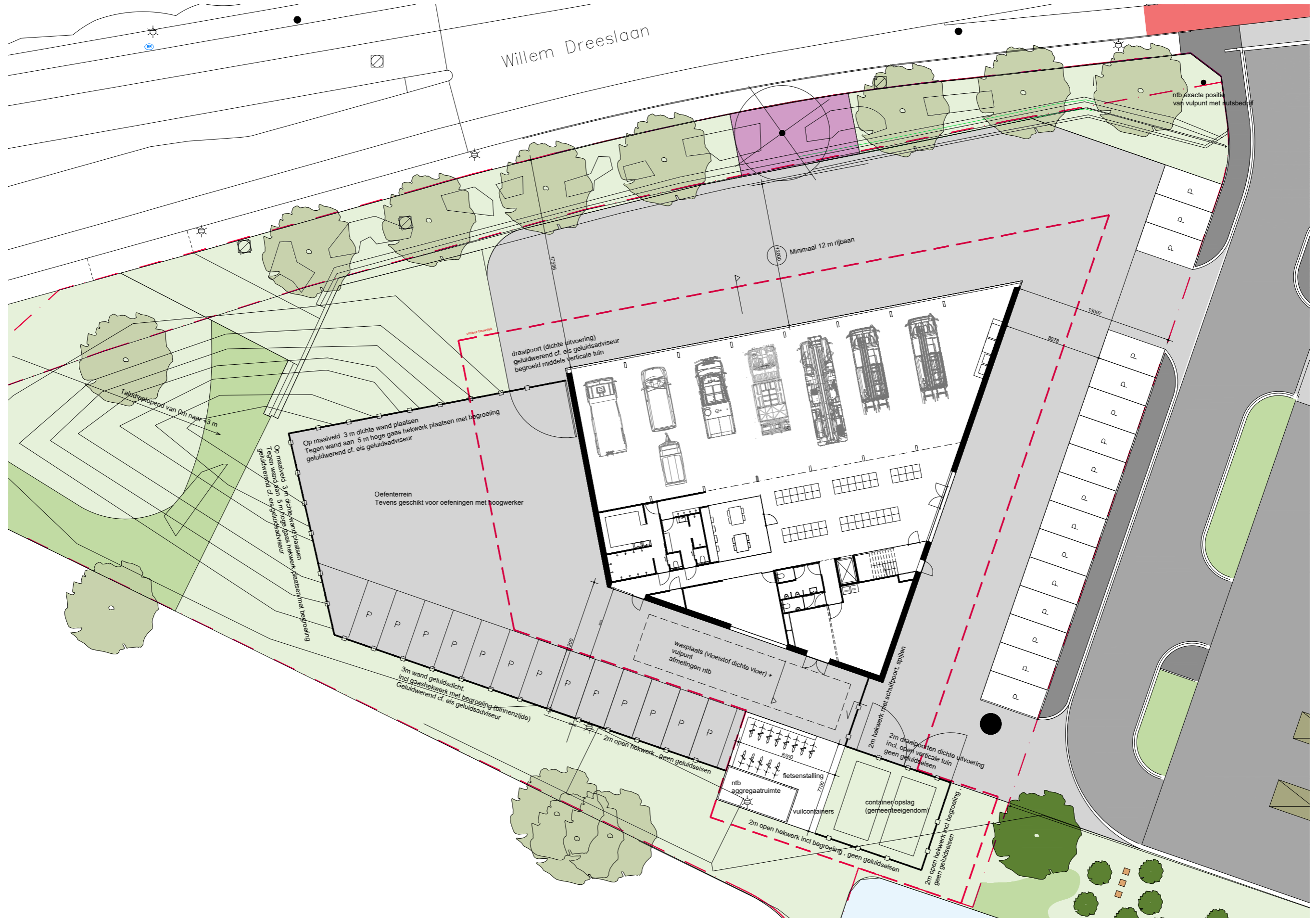


TRANSPARANTIE VS GESLOTENHEID



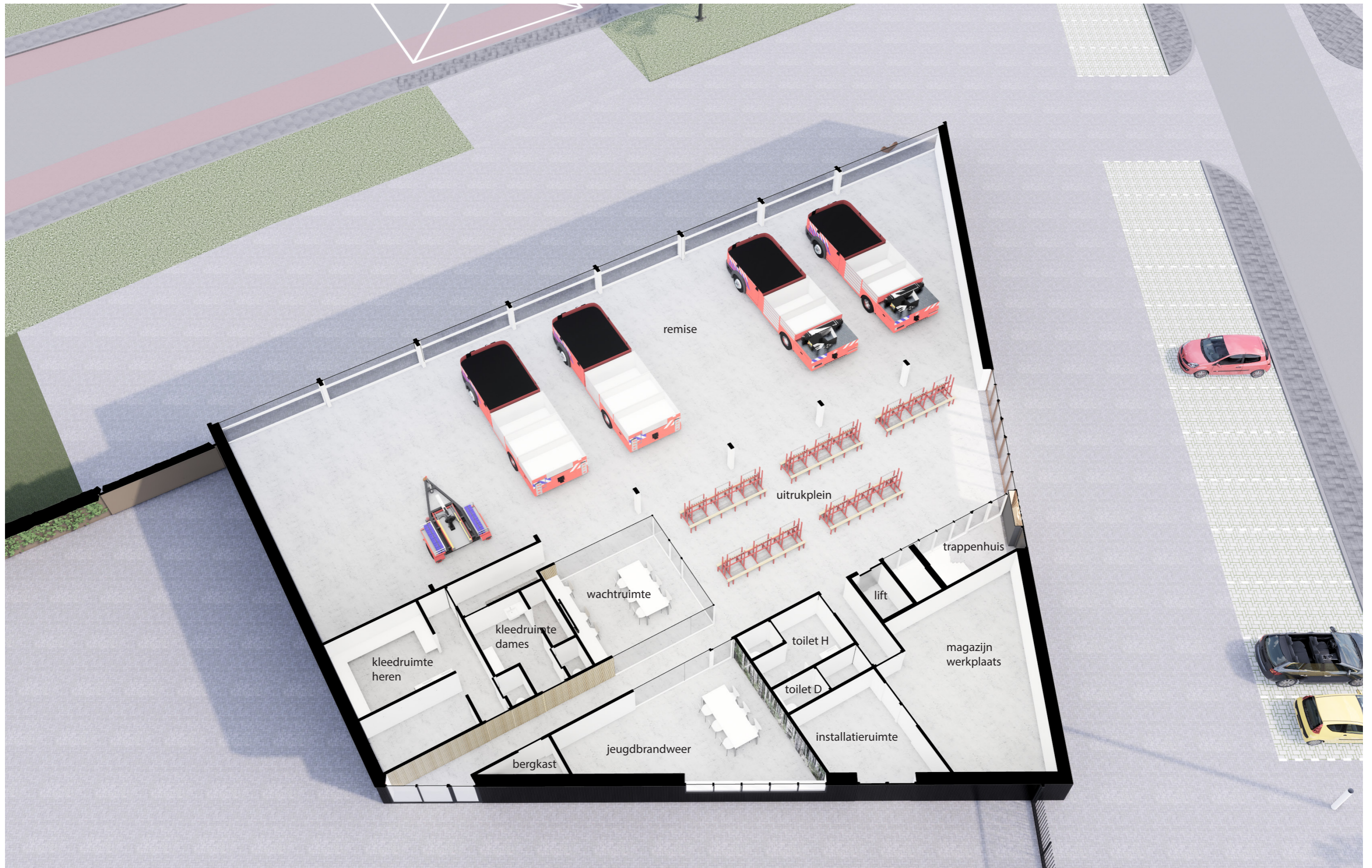
ORGANISATIE IN DOORSNEDE



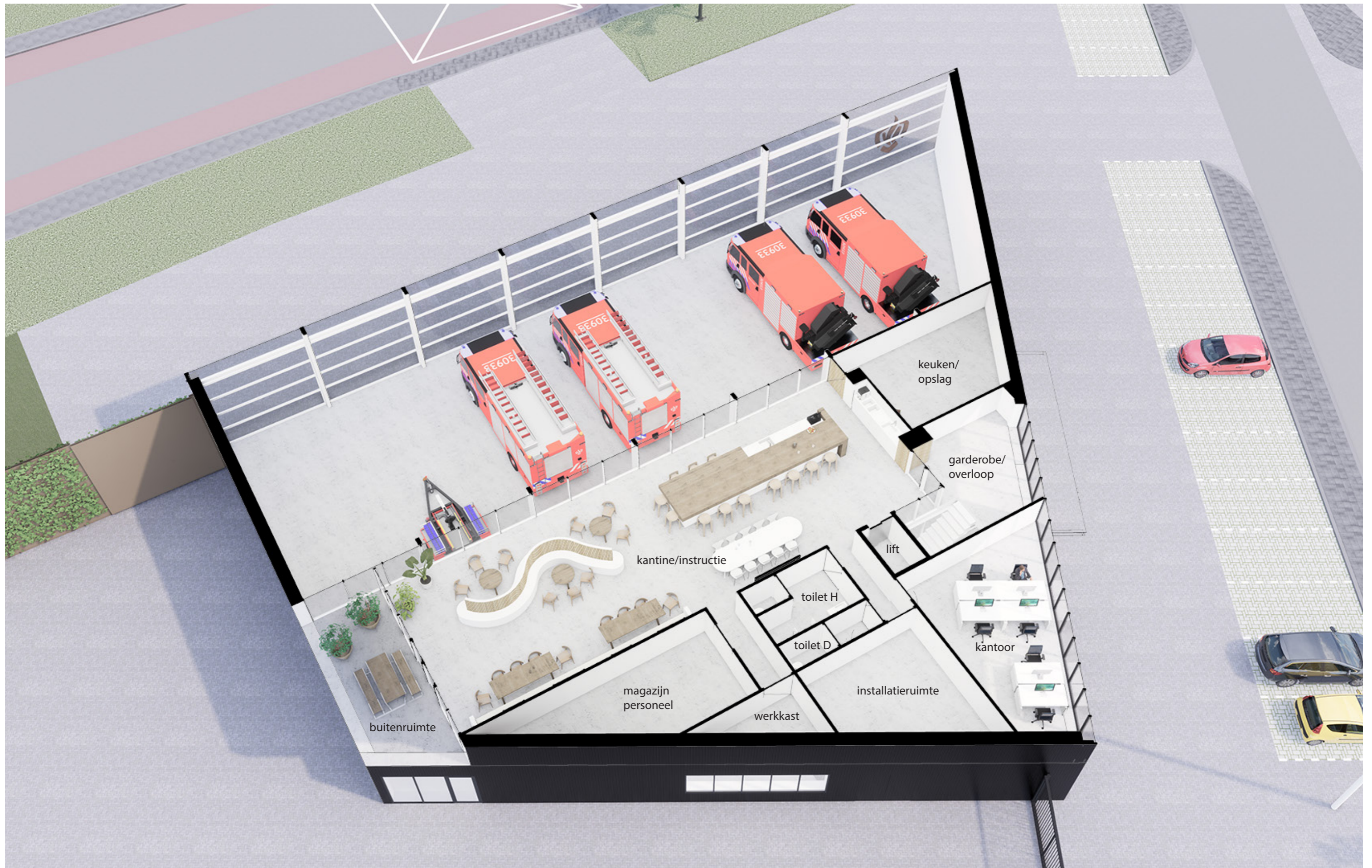




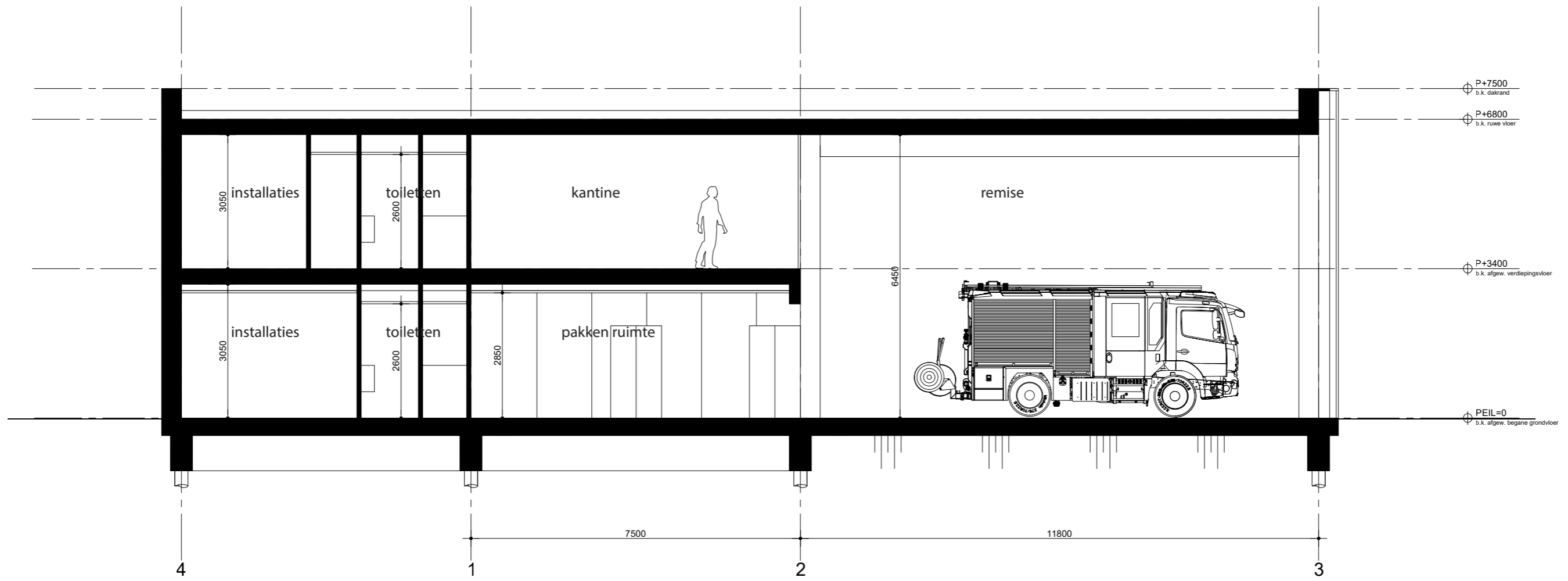
AXONOMETRIE BEGANE GROND



AXONOMETRIE EERSTE VERDIEPING



DOORSNEDE A

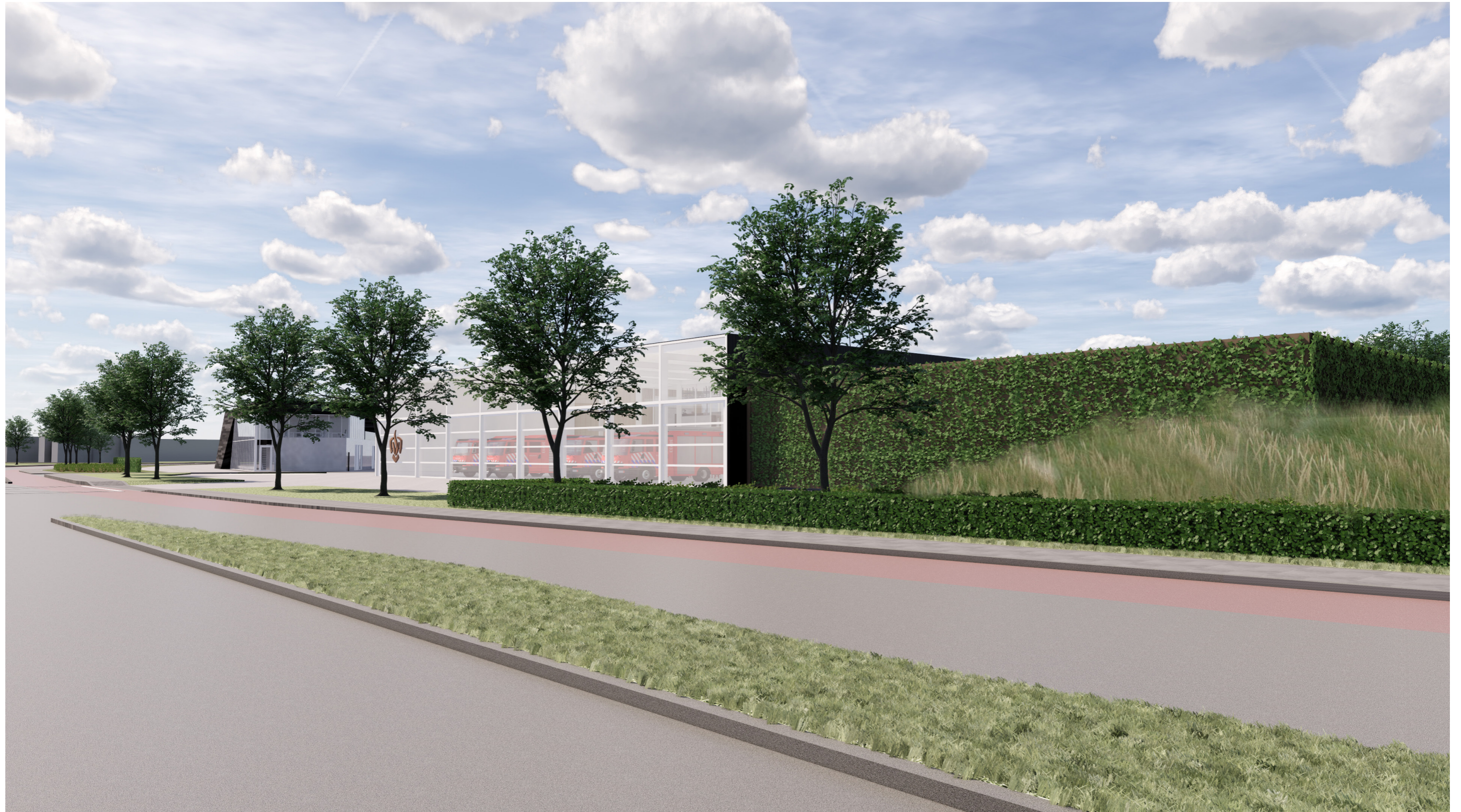


GEVELAANZICHT NOORD

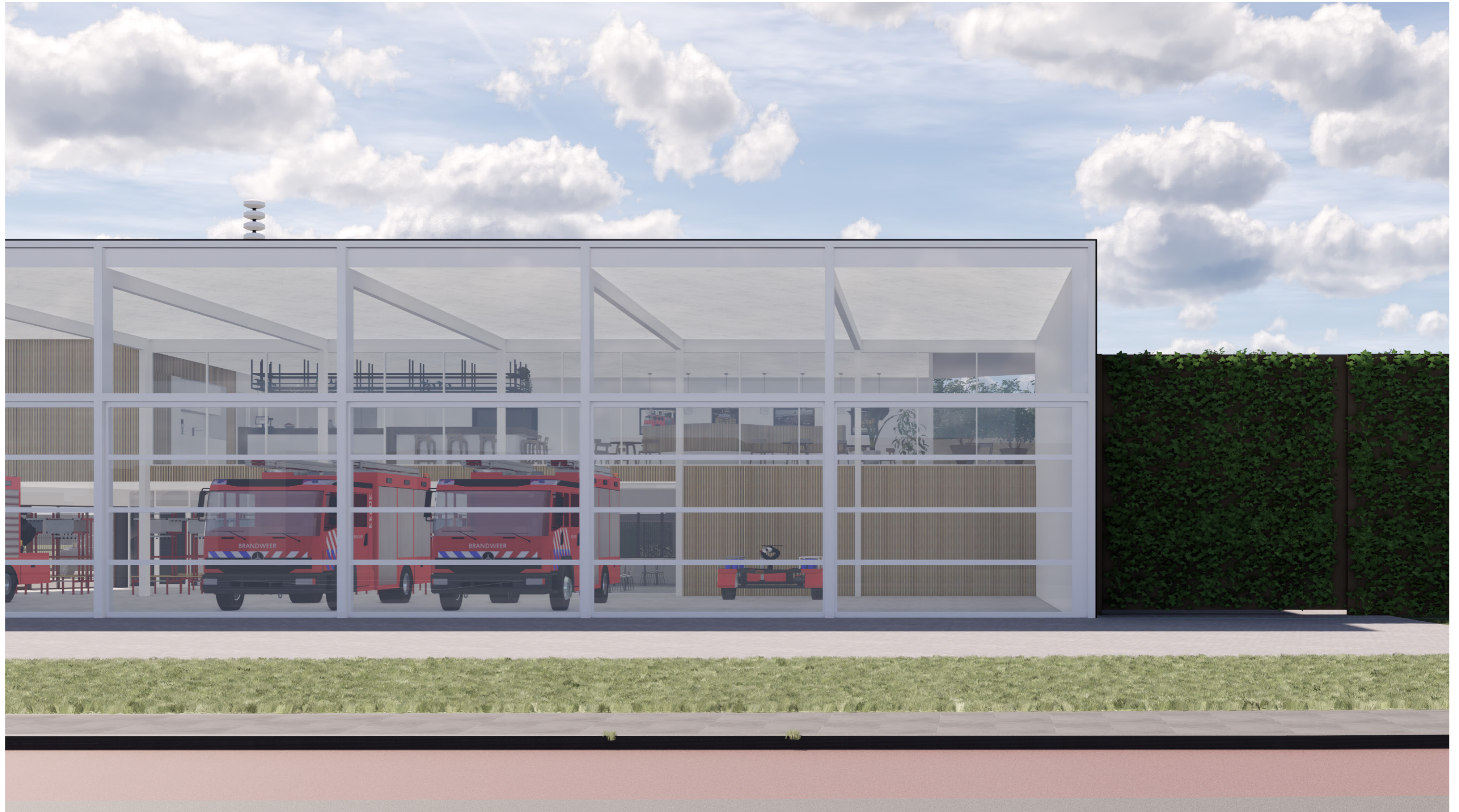














STRAKKE DETAILLERING



ETALAGE VOOR BRANDWEERWAGENS





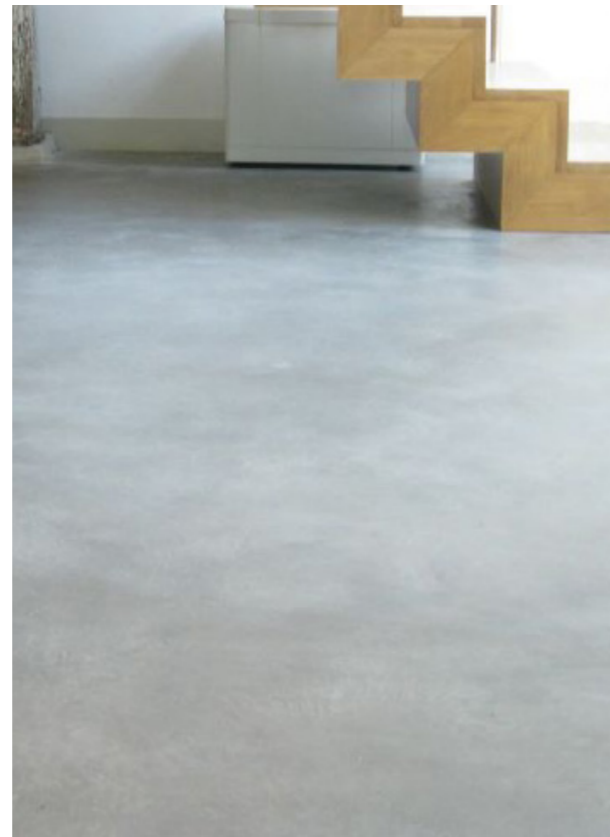
VLIESGEVEL



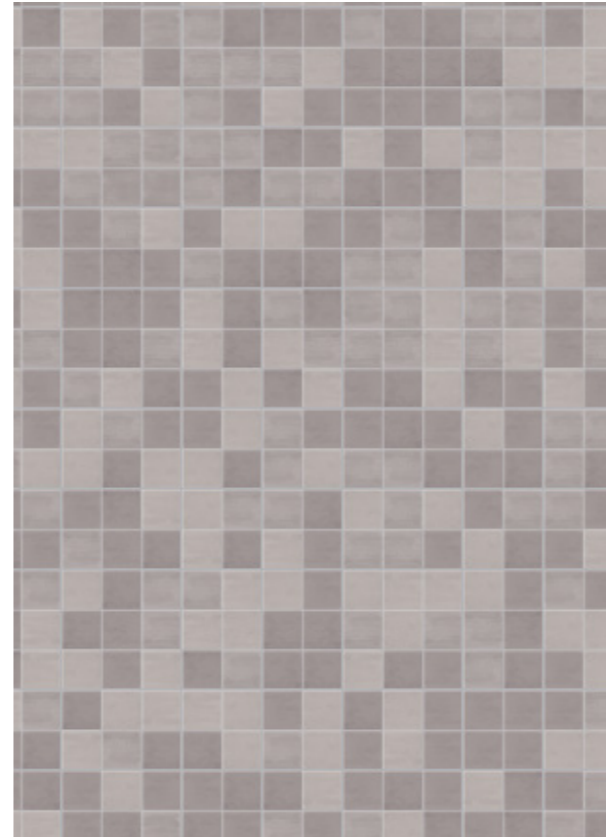
MATO ALUMINIUM GEVELBEKLEDING



HOUTEN AFWERKING BINNEN



BETONVLOER



TEGELWERK



PLAFOND

